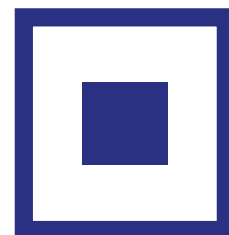




STEVENS

Inspired by the care you deliver



Operating Room Essentials



A smart investment
Heine® Laryngoscopes outlast
and outperform other systems.



Unmatched fiber optics

Up to 6,500 fiber optic strands for superior light transmission and longevity.

Superior steel

Corrosion resistant 304 grade stainless steel for a lifetime of service

Clearest view

Get the most illumination where you need it with integrated fiber optic bundle design.

HEINE® Classic+ Macintosh F/O Blades

- One-piece design, stainless high-grade steel
- 4000 autoclave cycles
- The clean shape without any edges or corners is easy to clean and sterilize



#799-F-000.22.100 #0 infant
#799-F-000.22.101 #1 ped.
#799-F-000.22.102 #2 infant (B)
#799-F-000.22.103 #3 normal
#799-F-000.22.104 #4 adult
#799-F-000.22.105 #5 X-large adult

EasyClean
LED Standard

EasyClean
LED Slim

EasyClean
LED Short

Standard F.O.

Slim F.O.

Short
Standard F.O.



HEINE® Classic+ Miller F/O Blades

- Easy intubation
- 4000 autoclave cycles
- The shortened shoulder of the blade dramatically improves the anaesthetist's view of the epiglottis and vocal cords



#799-F-000.22.119 Miller #00
#799-F-000.22.120 Miller #0
#799-F-000.22.121 Miller #1
#799-F-000.22.122 Miller #2
#799-F-000.22.123 Miller #3
#799-F-000.22.124 Miller #4

HEINE® EasyClean LED Laryngoscope Handle

- 100% waterproof
- Non-slip "Wave Design" improves the reliability of the wipe disinfectant for the handle after use
- Autoclavable LED technology
- 3x brighter than conventional halogen light
- Virtually unlimited hours of working life
- Typ. 10 hours of operating time

#799-F-008.22.820 standard
#799-F-008.22.821 slim
#799-F-008.22.822 short

HEINE® F.O. Laryngoscope Battery Handle (XHL)

#799-F-001.22.860 standard, uses "C" batteries
#799-F-001.22.812 short, uses "AA" batteries
#799-F-001.22.800 slim, uses "AA" batteries

HEINE® ML4 LED Headlight

- **Adjustable illumination spot size:** 30mm to 80mm spot size range (at 420mm working distance) to fit any examination situation.
- **Bright and homogenous illumination:** Absolutely bright light spot that is uniform from edge-to-edge for the perfect illumination in all examination situations.
- **Stepless light intensity control:** Optimal brightness setting prevents reflexes.
- **Flexible Power Source Options:** 100% mobility with a choice of cable-free mPack UNPLUGGED head-worn battery or mPack belt-worn battery pack.
- **Coaxial illumination:** Coaxial design ensures a completely shadow-free image and allows for excellent illumination of difficult to see areas.
- **Comfortable and secure fit:** The Professional L headband has multiple adjustment points and soft padding for comfort and stability – even during long examinations.

#799-J-008.31.413 w/mPack and plug-in transformer

#799-J-008.31.415 w/mPack UNPLUGGED and plug-in transformer

#799-J-008.31.417 w/Wall Mounted EN 50 UNPLUGGED charger and 1x mPack UNPLUGGED



Enova® XLT-225A Cordless Surgical Headlight

- 225,000 Lux
- Complete mobility in the OR with no tether to light source
- Illuminates even the deepest surgical cavity
- Adjustable illumination spot: 2"-5" (5-15cm)
- Coaxial alignment for maximum light penetration
- Up to 24" working distance
- 5+ hour battery life at full intensity
- 50,000 hours LED life
- Double padding for comfort

#125-90083-001



Enova® XLT-150A Cordless Surgical Headlight

- 150,000 Lux
- Complete mobility in the OR with no tether to a light source
- Illuminates even the deepest surgical cavity
- Adjustable illumination spot: 2"-5" (5-15cm)
- Coaxial alignment for maximum light penetration
- Up to 24" working distance
- 5+ hour battery life at full intensity
- 50,000 hours LED life
- Double padding for comfort

#125-90092-004



Sol-M™ AAMI Level 3 Surgical Gowns SMMMS

AAMI Level 3 gowns made from 5-ply SMMMS material with hook and loop neck closure, waist belt, and passcard. Sterile in a wrapper with hand towel.

#348-SIGA321 Large
#348-SIGA322 X-Large
#348-SIGA323 XX-Large

case of 50



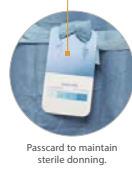
AAMI Level 3



Premium knit cuffs.



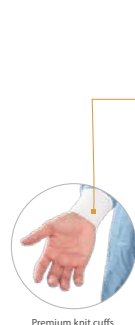
Easy hook and loop neck closure.



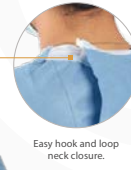
Passcard to maintain sterile donning.



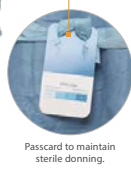
AAMI Level 4



Premium knit cuffs.



Easy hook and loop neck closure.



Passcard to maintain sterile donning.

Sol-M™ AAMI Level 4 Reinforced Surgical Gowns

A 5 ply non-woven SMMMS material with poly-coated reinforcements in the critical zones, which is a lighter weight gown that still meets AAMI Level 4 surgical gown standards. Sterile packed in wrapper with hand towel.

#348-SIGA411 Large
#348-SIGA412 X-Large
#348-SIGA413 XX-Large

case of 50

CLEANPatch® Surface Repair Patch

- FDA, Health Canada and CE registered Class I medical device
- Made of latex-free, biocompatible materials
- Peel and stick application
- Clinically tested and validated by independent infection prevention professionals
- Durable and impervious to fluids under rigorous conditions
- Fully cleanable with hospital disinfectants

For vinyl

#904-21001	1¾" x 4" strip	box of 10
#904-22001	5¾" x 8" rectangle	box of 5
#904-23001	variety pack of 7 strips and 3 rectangles	box of 10
#904-24001	starter pack of 2 strips and 1 rectangle	box of 3

For non-vinyl

#904-10001	9cm x 9cm	box of 20
#904-10003	9cm x 9cm	box of 5
#904-12001	9cm x 15cm	box of 10
#904-11001	5cm circle	box of 30
#904-18003	variety pack (5 x small, 3 x medium, 2 x large)	pack of 10



HUNTLEIGH

Huntleigh Dopplex® D900 Non-Directional Vascular Doppler

- Clear audio sounds of blood flow or fetal heart
- Enhanced battery management
- Compatible with the complete range of vascular probes
- Large carry bag and headphones included

#684-D900-P/CSA doppler, without probe



Multi Dopplex® II Bi-directional Doppler

- One of the most advanced handheld units in the world
- Ideal for assessment of peripheral vascular disease, the diabetic foot, and venous applications
- Display provides information on flow direction and unit status
- Can be used by healthcare professionals interested in bi-directional flow and waveforms

#684-MD2-P/CSA doppler, without probe



Dopplex® DMX Digital Doppler with Waveform

Our Bi-Directional waveform is uniquely generated from the digital Doppler spectrum. This gives the clinician objective evidence to assist in the diagnosis of vascular disease that other Dopplers may find difficult or impossible to achieve.

- High Resolution Colour Display.
- Bi-directional Waveform generated from the Digital Doppler Spectrum with Audio Scaling features.
- Data Storage on Micro SD Card.
- Integrated Charging & Connectivity.
- High Sensitivity Interchangeable Probes.
- Dynamic Digital Noise Reduction.

#684-DMX/CSA Alkaline Battery-Operated
#684-DMXR/CSA Rechargeable



Huntleigh Dopplex® Single-Use Intraoperative Probes

- Supplied Sterile – Ready for immediate use.
- 8MHz operation for reliable flow detection in native vessels.
- Simple operation – special electronic adaptor resists diathermy interference.
- Maximum sensitivity every time.
- Lightweight and easy to hold.

#684-DIPP10 Probes Without Adaptor **box of 10**
#684-DISP10XS PA8XS Probe Adaptor, Pole Clamp & 10 Probes (for DMX Doppler) **Kit**
#684-DISP10 PA8-HG Probe Adaptor, Pole Clamp & 10 Probes (for D900, MD2 and SD2 dopplers) **Kit**



Stevens offers a wide variety of Surgical Put-Ups.

Please speak to your Stevens Representative for all available options.



Anaesthesia Drape "Peach" Clip

- Used to attach surgical drape to IV poles to create barrier at patient's head
- Can be used for a variety of other clamping purposes
- Heavy duty holding power that will not slip wide, easy-to-grip surface
- Non-rusting components
- Multiple colours
- Not made with natural rubber latex



#347-JPC-3NS **case of 8**

PAMA Custom Trays

Canadian manufacturer of customized sterile packs and trays.

- Fully customizable for every department in the hospital
- Ecofriendly
- Cost saving
- Fast turnaround time



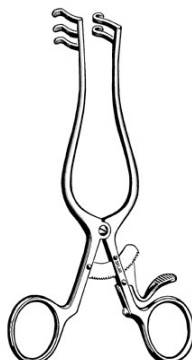
Whatever your
sterilization
needs,
Stevens has
you covered!

Surgical Instruments



Stevens has a wide variety of surgical instruments available.

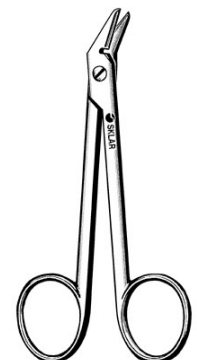
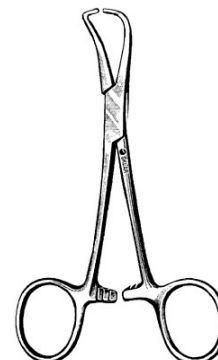
Please speak to your Stevens Representative for the options that are best for you.



Detailed product
selection by specialty:



stevens.ca/qr-or19-1



Pedigo® CDS-235 Case Cart

- Cabinet dimensions: 28½"W x 28"D x 47"H
- Usable interior space: 25¾"W x 27¾"D x 44½"H
- Overall dimensions: 34½"W x 32¾"D x 56"H
- Optional shelves available

#145-CDS-235



Pedigo® CDS-242 Case Cart

- Cabinet dimensions: 40¼"W x 24¼"D x 30"H
- Usable interior space: 37¾"W x 23½"D x 27½"H
- Overall dimensions: 45⅞"W x 28⅝"D x 39"H
- Optional shelves available

#145-CDS-242



Pedigo® CDS-256-MS Case Cart

- Cabinet Dimensions: 23"W x 24¼"D x 30"H
- Usable Interior Space: 20⅞"W x 23½"D x 27½"H
- Overall dimensions: 28⅝"W x 28⅝"D x 39"H
- Optional shelves available

#145-CDS-256-MS



Infab C-Arm Drape and Kit

- CE Certified
- Sterile
- Latex-Free
- *Kit includes C-Arm drape, grey foot switch cover, image intensifier and x-ray tube cover, 5 mounting clips.

#807-1001-BX

C-Arm Drape

box of 15

#807-1002

*C-Arm Kit

case of 20



AMT MiniONE® Button Low Profile Balloon Gastrostomy Tube

The MiniONE® Balloon Button was designed to reduce gastric leakage that can cause nutrient loss, skin damage and granulation tissue

- Exclusive AMT Balloon—apple-shaped, expands horizontally >50% more internal stoma coverage
- Tapered Transition from bolster to tube, for a more secure fit
- Anti-Reflux Valve—prevents backflow
- Adjustable Balloon Volume—ensures proper fit
- Available in 12F, 14F, 16F, 18F, 20F & 24F

Contact your local Sales Rep for more info



**MiniONE
Brochure w/
Available Sizes**

Bedal® Catheter Securement Devices

- Bedalx® PIVC — Suitable for stabilizing & fixating a large range of catheters with a luer lock connection, such as: Peripheral IV lines, arterial lines & mini-midlines.
- Bedal® PICC | CVC — Suitable for all types and brands of venous catheters & arterial lines with suture wings.
- Bedal® EPI | PNB— Suitable for stabilizing & fixating a large range of catheters, such as: Plexus & epidural catheters, spinal neuro modulation electrodes (pain management), harpoons (breast cancer), CVC & midlines.
- Reducing infection risk:
 - Absence of catheter-pistoning (micro motions)
 - Absence of any glue to fixate catheter onto device, which reduces dirt build-up
 - Tape material is non-absorbent and resistant to excess fluids

#511-PV02

Bedal PIVC

box of 25

#511-PC02

Bedal PICC/CVC

box of 25

#511-EP02

Bedal EPI | PNB

box of 50



Bedal PIVC



Bedal PICC | CVC



Bedal EPI | PNB



Litholyme® CO₂ Absorbent

A new carbon dioxide absorbent for medical use that eliminates the common concerns with traditional soda lime based products in that it eliminates the potential for production of compound A, carbon monoxide, and excessive heat. Its patented formula does not contain any NaOH or KOH, and features a permanent off-white to violet colour change.

#700-55-01-0013	21L pail	
#700-55-01-0015	1kg cylindrical canister	case of 12
#700-55-01-0017	GE multi-style cartridge	case of 6
#700-55-01-0018	GE compact style cartridge	case of 10
#700-55-01-0016	1.6L bag refill	case of 12
#700-55-01-0019	Dräger cartridge	case of 6



Carb-O₂-Lime™ CO₂ Absorbent

- No KOH—minimum anaesthetic agent degradation (e.g., sevoflurane to Compound A and other toxic products) compared to other brands containing potassium hydroxide
- Contains NaOH
- Low dust—minimum dust levels with the benefits of high surface area and graded particle size
- Low risk of carbon monoxide formation due to good resistance of dry gas desiccation
- Low odour due to reliable control of indicator dye concentration. Dye overdosing causes amines to be released; dye underdosing causes poor/no colour change

#700-55-01-0023	21L pail	
#700-55-01-0025	1kg cylindrical canister	case of 12
#700-55-01-0027	GE multi-style cartridge	case of 6
#700-55-01-0028	GE compact style cartridge	case of 10
#700-55-01-0026	1.6L bag refill	case of 12
#700-55-01-0029	Dräger cartridge	case of 6



Anasept® Antimicrobial Skin & Wound Cleanser

An extremely safe and gentle antimicrobial skin and wound cleanser with exceptionally rapid broad-spectrum bactericidal, and fungicidal properties. Anasept® is a very pure, completely colourless, isotonic, tissue compatible solution. Anasept® is stable for 24 months at room temperature and is free of necrotizing chemicals such as sodium hydroxide, borates or carbonates found in other antiseptic products. Anasept will not cause those unsightly brown Povidone iodine stains.

#469-4004C	dispensing cap, 4oz	case of 24
#469-4004SC	finger spray, 4oz	case of 12
#469-4008C	dispensing cap, 8oz	case of 12
#469-4008SC	finger spray, 8oz	case of 12
#469-4008TC	trigger spray, 8oz	case of 12
#469-4012SC	trigger spray, 12oz	case of 12
#469-4016C	dispensing cap, 15oz	case of 12

Anasept® Antimicrobial Wound Irrigation Solution

A clear, isotonic liquid that helps in the mechanical removal of the debris from the application site while delivering 0.057% broad-spectrum antimicrobial sodium hypochlorite via Negative Pressure Wound Therapy Device.

- FDA Cleared, Antimicrobial Wound Irrigation Solution contains a broad-spectrum antimicrobial sodium hypochlorite that inhibits the growth of antibiotic resistant strains such as Methicillin Resistant Staphylococcus aureus (MRSA), Vancomycin Resistant Enterococci (VRE), Carbapenem Resistant Escherichia coli (CRE), as well as fungicidal, sporicidal and virucidal properties
- Easy to use spikeable container with an integrated hanger that can be quickly attached to an I.V. Pole or NPWT and can be used with most Negative Pressure Wound Therapy Systems that are available with instillation or infusion capability
- Clinically Tested: Anasept® is clinically proven to reduce bioburden levels and improve the rate of healing
- Non-flammable—can safely be used in hyperbaric chambers
- Stable for 24 months when maintained at normal room temperature

#469-4160IC	16oz	case of 12
-------------	------	-------------------





Accel® PREvention™

Product of choice for environmental responsibility and exceptional product performance. The PREvention™ product line provides the best balance of speed of disinfection, spectrum of disinfection efficacy, cleaning efficacy, health and safety, and environmental preferability.

EcoLogo certified! 3 Minute General Virucide, Bactericidal, Fungicidal, Tuberculocidal, Broad Spectrum Sanitizer.

#907-101103732 liquid, 3.78L
#907-100906721 wipes, 6" x 7"
pack of 160



Accel® INTERvention™

- The FASTEST disinfectant formula registered with Health Canada
- Bactericidal, General Virucidal, and Tuberculocidal efficacy in 1 minute!
- Intended for use as an OUTBREAK INTERVENTION
- 1 min contact time ideal for addressing bacterial (MRSA, VRE, etc.) or viral outbreaks (Norovirus, Influenza, etc.)

#907-101103733 liquid, 946mL
#907-100906585 wipes, 6" x 7"
pack of 160

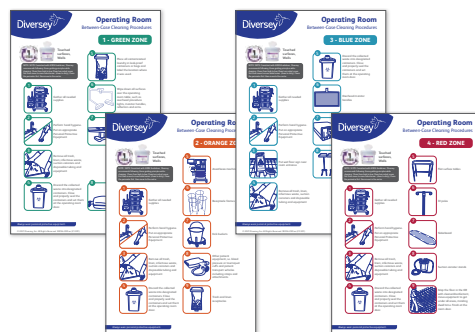
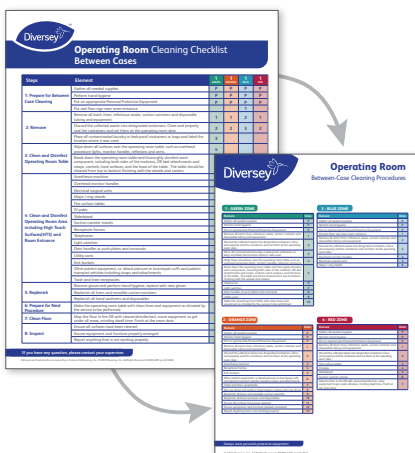


Accel® Rescue™

- Health Canada's first registered sporicidal surface disinfectant
 - Sporicidal in 10 minutes!
 - Intended for use as a task oriented disinfectant for C. diff isolation rooms or during a C. diff outbreak
- #907-101103737 gel, 946mL
#907-100906725-6X7
wipes, 6" x 7" **pack of 160**



Innovative Solutions To Boost O.R. Turnover



Diversey's zone-based system of cleaning and disinfection procedures brings a new level of turnover speed and efficacy to between case and terminal disinfection.

This system boosts productivity, contributes to infection prevention and helps create a safer, more satisfying environment of care.

- Process Assessment
- Team Role Definition and Enablement
- Product to Practice Optimization
- Improved Turnover Speed



Equipment & Surfaces

Part of a complete line of products, tools and procedures to speed up operating room turnover without compromising quality.

Find out more at sdfhc.com

All logos and trademarks are owned by or licensed to Diversey, Inc.
© 2022 Diversey, Inc. All Rights Reserved. 95024-WBN en (22/203)



Walls & Floors



Communication Labels

Pre-printed communication labels offer important, relevant messaging. The bright and highly-visible labels are a perfect identification solution for containers, rooms and materials.

Lab Communication Label

- Text: "Date Received/Opened/Expired"
- Yellow
- 1-7/16" x 1"

#175-MV03SY1003

roll of 666



Paper Label

- Text: "Sterile Unless Package Opened"
- Fluorescent red
- 2 1/4" x 1"

#175-MV04FR0465

roll of 420



Medication Labels

Pre-printed medication labels offer important, relevant information to protect your patients and eliminate confusion. A wide selection of labels is available which include medication names and dosages, in an assortment of colours.

Paper Label

- Text: "Medication Added"
- Fluorescent red
- 2" x 3"

#175-59704607

roll of 500



Anaesthesia Label

- Text: "Epinephrine _ mg/ml. Date _ Time _ Init _"
- Violet and black
- 1 1/2" x 1/2"

#175-59708981

roll of 1000



Sandel Trip-No-More™ Cord Alert

A bright orange disposable cord cover designed to reduce trips and falls caused by unseen cords and tubes on the floor.

- Distinctive in its bright orange colour and easily recognizable
- Serves as a "beacon" so healthcare personnel know where floor cords and tubes are located
- The Trip-No-More™ features adhesive strips to keep it in place. It is easy to apply, easy to remove and leaves no residue

#205-2302 8" x 24" **bag of 25**
#205-2303 8" x 36" **bag of 25**
#205-2309 8" x 125ft **roll**

Sandel Ergo-Step™ Stool

Light-weight, stackable step stools that provide an alternative to traditional heavy metal step stools.

- Weight capacity: 500lb
- Anti-skid feet will keep it firmly planted
- Interlocking feature creates a safe work platform
- Distinctive in its bright orange colour and easily recognizable

#205-1170 2 tops, 2 bottoms **case of 4**
#205-1170-B 4 bottoms **case of 4**



Sandel ErgoPlus Anti-Fatigue Mats

Anti-fatigue mats designed to help reduce the stress and strain on muscles and joints caused from standing during long procedures.

- Premium padding for additional comfort

#205-2317-P 13" x 17" **case of 5**
#205-2332-P 20" x 32" **case of 4**
#205-2348-P 20" x 48" **case of 4**



www.stevens.ca



Atlantic Canada

101 Thornhill Drive – Unit 109
Dartmouth, NS B3B 1S3

Tel: 1-800-565-0765
Fax: 902-468-7824
Email: ACCS@stevens.ca

Québec

9390 boul des Sciences
Anjou, QC H1J 3A9

Tél: 1-855-660-7750
Télé: 514-352-9214
Email: QCSAC@stevens.ca

Ontario

425 Railside Drive
Brampton, ON L7A 0N8

Tel: 1-800-268-0184
Fax: 905-791-6143
Email: ONCS@stevens.ca

Manitoba

475 De Baets Street – Unit 2
Winnipeg, MB R2J 4M3

Tel: 1-800-665-0368
Fax: 1-888-640-8088
Email: MWCS@stevens.ca

Midwestern Canada

2620-61st Avenue S.E.
Calgary, AB T2C 4V2

Tel: 1-800-665-0368
Fax: 403-640-2976
Email: MWCS@stevens.ca

British Columbia

19051-27th Avenue,
Surrey, BC V3Z 5T1

Tel: 1-800-565-8444
Fax: 604-585-0193
Email: BCCS@stevens.ca